

1. Scope

This SOP describes the steps to safely start-up, restart, or shutdown the Carestream OnSight 3D Extremity Scanner within the WBCT suite.

2. Procedures

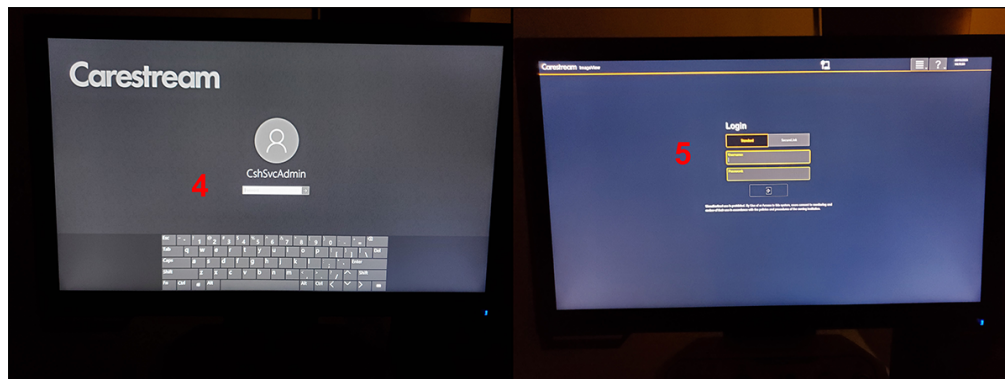
a. System Start-up Procedure

- Weight-bearing CT System Start-up

1. In the operator area, open the left panel, flip the switch to the “OFF” position, then return the switch to the “ON” position.
2. Open the right panel and press the power button on the power conversion unit.
3. Press the power button on the PC, located below the power conversion unit, to start the system software.



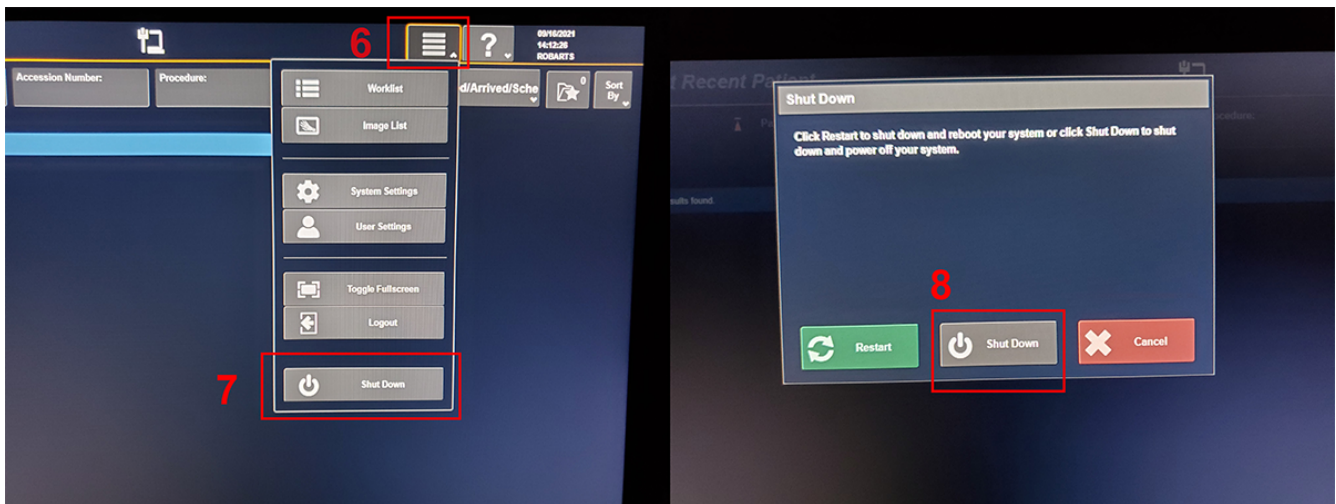
4. Log onto the PC using corresponding password to the username on the screen. The passwords are posted on the right side of the WBCT system.
5. Login to the WBCT software by entering “robarts” as the username and password.



b. System Shutdown Procedure

- Weight-bearing CT System Shutdown

6. Click the icon with 3 horizontal lines to display a drop-down menu.
7. Select “Shut down” from the drop-down menu.
8. Confirm system shutdown by clicking the “Shut down” button.



9. Press the power button on the power conversion unit to turn off the system.

c. Emergency Stop Button Locations



Figure 1: Emergency Stop buttons located on the gantry and on the operators' console.